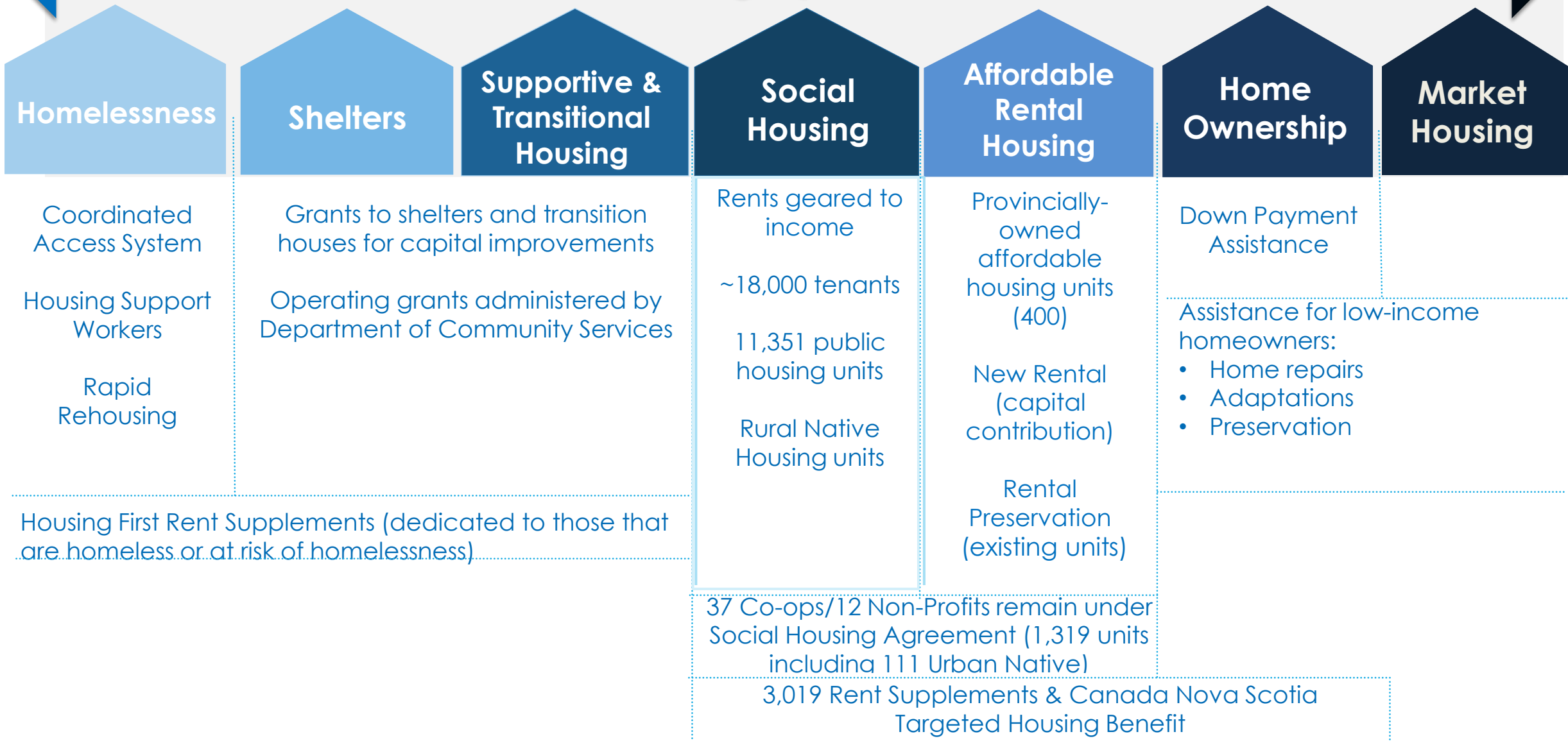


Standing Committee on Community Services

INFRASTRUCTURE AND HOUSING

JUNE 2021

Housing Spectrum



As of March 2021

Accomplishments – 2019/20 and 2020/21

3

- ▶ Signed 10-year bi-lateral agreement with CMHC and addendum for the Canada-Nova Scotia Targeted Housing Benefit resulting in over \$500 M in investments
- ▶ Launched new programming, including:
 - ▶ Community Housing Capacity Building – activities that stabilize and strengthen the sector
 - ▶ Community Housing Infrastructure – capital repair and renewal of units in co-op and non-profit units
 - ▶ Indigenous Housing – capital repair and renewal of off-reserve indigenous housing units
 - ▶ Public Housing Accessibility – converting units to fully-accessible or near-accessible
 - ▶ Canada-Nova Scotia Targeted Housing Benefit for low-income households:
 - ▶ Renters - portable benefit targeted to renters in core housing need
 - ▶ Homeowners – benefit targeted to homeowners in severe core housing need
- ▶ Expanded the Down Payment Assistance program for first-time homebuyers
- ▶ Re-profiled funding to create new affordable housing units
- ▶ Initiated work to pilot a public housing asset transfer to the community housing sector

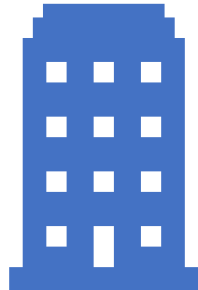


HOMEOWNERS

\$34.2M = 3,781 homes assisted through repair & adaptation programs

\$2.4M million = 330 first-time homebuyers provided with down payment assistance

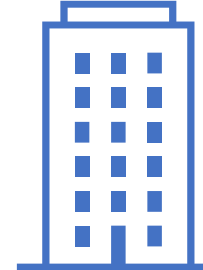
\$0.06M = 95 households with reduced housing need through Canada-Nova Scotia Targeted Housing Benefit



PRIVATE RENTAL HOUSING

\$4.2M = 98 units of new construction affordable rentals

\$3.4M = 160 units repaired and maintained as affordable rentals



COMMUNITY HOUSING

\$8.3M = 197 units of new construction affordable rentals

\$6.2M = 205 units repaired

\$5.4M = 53 indigenous housing units repaired to good condition

\$0.2M = 45 indigenous housing units with maintained affordability for tenants

\$1.6M = 42 organizations assisted to increase capacity, strengthen, and stabilize

\$0.05M = 16 shelters repaired



PUBLIC HOUSING

\$23.7M = 542 capital repair and renewal projects completed to maintain buildings

\$11.4M = 104 greening projects completed with reduced energy consumption

\$2.7M = 20 units fully accessible, 40 units to near accessible standards

\$1.5M = 18 units in public housing transformation pilot

\$20.6M = 3,019 low-income and homeless households with reduced housing need through a rent supplement or Canada-Nova Scotia Targeted Housing Benefit

Planned for 2021/22

- ▶ Finalize work with the Affordable Housing Commission
 - ▶ Recommendations submitted May 31, 2021
 - ▶ Government response and implementation plan
- ▶ Negotiate 2022 – 2025 Action Plan under the National Housing Strategy with CMHC
- ▶ COVID-19 response
 - ▶ Increased expenditures of \$7.29M in 2021-22 for supplies, staff and cleaning services
- ▶ Program and operational review, evaluation, and modernization
- ▶ Evaluate options and identify additional pilot opportunities targeted to increasing the long-term sustainability of Public Housing
- ▶ Continued programming including investment in Community Housing sector to stabilize and strengthen the sector and position it for growth, support for low-income home-owners, and continued implementation of the CNSTHB

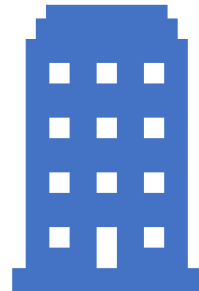


HOMEOWNERS

\$15.0M = 1,250 homes assisted through repair & adaptation programs

\$2.2M million = 300 first-time homebuyers provided with down payment assistance

\$2.0M = 830 households with reduced housing need through Canada-Nova Scotia Targeted Housing Benefit

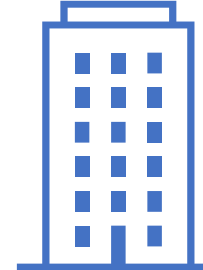


PRIVATE RENTAL HOUSING

\$2.0M = 29 units of new construction affordable rentals

\$1.5M = 40 units repaired and maintained as affordable rentals

\$19.9M = 3,600 low-income and homeless households with reduced housing need through a rent supplement or Canada-Nova Scotia Targeted Housing Benefit



COMMUNITY HOUSING

\$2.1M = 29 units of new construction affordable rentals

\$4.2M = 140 units repaired

\$1.8M = 18 indigenous housing units repaired to good condition

\$0.2M = 51 indigenous housing units with maintained affordability for tenants

\$1.5M = Organizations assisted to increase capacity, strengthen, and stabilize

\$0.02M = 6 shelters repaired



PUBLIC HOUSING

\$17.9M = 435 active projects planned for capital repair and renewal to maintain buildings

\$6.8M = 52 greening projects completed for reduced energy consumption, 4 to Net Zero

\$2.2M = 10 units fully accessible, 50 units to near accessible standards

\$3.8M = 44 units for public housing transformation

Thank you

Family Service Association of Western Nova Scotia - @fsawns

P.O. Box 131

Bridgewater, Nova Scotia

Canada B4V2L4



May 24, 2021

Standing Committee on Community Services

Legislative Committees Office

House of Assembly

Nova Scotia

1700 Granville Street

One Government Place

2nd Floor

Halifax, Nova Scotia

B3J 1X5

Dear Committee Members,

I am pleased to meet with the Standing Committee on Community Services on Tuesday, June 1, 2021, from 10:00 am to Noon, with respect to Housing, COVID-19 and the Homelessness Crisis. The presentation will

- Provide data on the Homelessness Crisis and Rural/Urban Migration during the COVID-19 pandemic, gathered through the Rural Lunenburg and Queens **Reaching Home** Housing Support Program funded by the Government of Canada, and through the Youth and Family programs funded by the Nova Scotia Department of Community Services, Prevention and Early Intervention.
- Identify structural barriers we encounter - at Provincial and local levels of governance - in our attempts to address the Rural Housing Crisis and Rural/Urban Migration
- Offer a socially, ecologically and financially sustainable Rural Housing template for blended value integration - of community equity, energy poverty reduction, rural youth trades training and education, civic renewal, and safe, supported and affordable housing construction - on the Main Streets of Rural Nova Scotia's hub communities.

Please find attached supporting photos and infographics I will reference during the presentation.

Family Service Association of Western Nova Scotia - @fsawns
P.O. Box 131
Bridgewater, Nova Scotia
Canada B4V2L4



Sincerely,

Art Fisher
Executive Director
Family Services Association of Western Nova Scotia
48 Empire Street
Bridgewater, NS
B4V 2L4

Attachments

- Youth Outreach Program
- Family Connections Program
- Men's Program
- Supported Access to Primary Healthcare Program
- Rural Housing Support Program, Lunenburg and Queens
- Trusteeship Program
- 629 King Family Housing and Rural Youth Shelter Diversion Program
- TEMPLATE: 641 King A Rural Housing Template for Blended Value Sustainability
- (Photo) 629 King Street before adaptive re-use for Housing Support and Housing
- (Photo) 629 King Street after
- (Photo) 641 King Street before beginning site remediation
- (Photo) 641 King Street first draft site massing diagram

YOUTH OUTREACH FREEMAN HOUSE

Youth Outreach supports youth 16 to 24 years old who are: experiencing individual, community and or system barriers placing them at risk, youth exiting care, young parents, Mi'kmaq/Aboriginal youth living off reserve, African Nova Scotian youth, Newcomer youth and 2SLGBTQIA+ youth.

Contact:

Kelsie Mosher kelsiemosher.fh@gmail.com 902-930-2117

Josh Goode joshgoode.fh@gmail.com 902-521-8486

1 OUTREACH IN OUR COMMUNITIES

Youth Outreach is mobile and can meet in the Lunenburg County communities and locations youth need. Youth can also connect with Youth Outreach Workers via text, email, phone, zoom and online gaming.



2 DROP-IN AT FREEMAN HOUSE

Youth can make drop-in connections at Freeman House with Youth Outreach & Family Connections Workers, and with other young people.



3 EMERGENCY RESPONSE & SUPPORT

The program provides individualized emergency responses and support based on the needs youth self-identify, including phones, wifi, shower, laundry and food.



4 PROGRAMS & WORKSHOPS

The program provides individualized, group, peer and mentoring supports that address areas such as personal life skill development, financial literacy, cultural and personal identity, health and well-being, relationships, etc.



5 BASIC NEEDS

The program supports fundamental youth rights and needs including: housing support, safety, food security, mobile phones, education and employment support, and supported access to primary health care for youth who would otherwise not access the healthcare system.



6 YOUTH-FAMILY RELATIONSHIP & OR CONFLICT RESOLUTION SUPPORT

Support to help resolve conflict between young people and their caregivers and/or family by encouraging and supporting positive family relationships.



7 COMMUNITY COLLABORATIONS AND CONNECTIONS

Youth Outreach coordinates with other service providers and organizations to link youth with the support and services they need, and address the individual, community and system barriers they identify.

**COMMUNITY
OF CARE**

FAMILY CONNECTIONS FREEMAN HOUSE

An outreach service to young people and /or their families who might not otherwise have access to services. The intended population is youth 12 to 24 years old, who are at high risk of / or have a breakdown in the youth / family relationship. **Contact: Cicely Smith**
cicelysmith.fh@gmail.com 902-398-1055

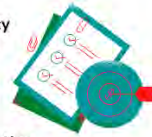
1 MOBILE SUPPORT & SERVICES

A key component of outreach is that the service is mobile and meeting those in need of outreach services at the locations where they are, for example, community and home visits can be offered.



2 INDIVIDUALIZED ASSESSMENT & CASE MANAGEMENT

A collaborative process of assessment, planning, facilitation, care coordination, evaluation and advocacy for options and services to meet a young person's and family's comprehensive needs.



3 YOUTH-LED GOAL PLANNING

Intentional space within assessment and care coordination for young people to identify and set their own goals. These goals are then used to lead the supports and services provided.

4 GROUP-BASED PROGRAMS & WORKSHOPS

Group-based programs & workshops support young people and / or their families to improve communication, relationships and reduce conflict, to prevent family breakdown and/or support reunification.



5 BASIC NEEDS SUPPORT & SERVICES

Provides information to youth and families about available resources and supports to support basic needs. Facilitates connections between young people and supports and services, and provides emergency and basic need supports, where and when available.



6 YOUTH-FAMILY RELATIONSHIP & OR CONFLICT RESOLUTION SUPPORT

Support to help resolve conflict between young people and their caregivers and/or family by encouraging and supporting positive family relationships.



7 COMMUNITY COLLABORATION AND CONNECTION

Collaborates with other service providers and organizations to ensure integrated delivery of programs and services. Builds strong working knowledge of and relationships with available community supports and services that benefit youth and families.



MEN'S PROGRAM

The Men's Program is for men 19+ who might not otherwise have access to services, including male-identifying persons working together with Child Protection, fathers of children in Care and or ordered to attend Domestic Violence intervention services, or rural and experiencing multiple barriers, Mi'kmaq/Aboriginal and living off-reserve, African Nova Scotian and or Newcomers.

Contact: Andrew Childerhose
intakemensprogram.fsawns@gmail.com 902-527-8601

1 OUTREACH

A key component of the Men's Program is outreach; the service is mobile and able to organize and facilitate groups linking men with individual, peer, co-parenting and social supports at community sites in the region.



2 UPCOMING: DROP-IN ACCESS AT 629 KING ST.

Drop-in access to Men's Program intake, support and services will be available Spring 2021 at 629 King Street.



3 BASIC NEEDS

629 King Street will help Men's Program participants 19 + access basic needs including: housing, safety, food security, mobile phones, shower, laundry, connection with education and employment support, and supported access to primary health care for men who would otherwise not access the healthcare system.



4 FATHERS GROUPS & WORKSHOPS

Groups & workshops support men in relation with their children and families, and include recognized men's programs - like Men's Trauma and Resilience, and Caring Dads - programs that are provided in a context of child-centred parenting and peer support.



5 NAVIGATION OF SUPPORT & SERVICES

The program provides individualized navigation of prevention, early intervention, intervention and emergency support & services based on the needs men self-identify.



6 MEN-FAMILY RELATIONSHIP AND OR CONFLICT RESOLUTION SUPPORT

Supports may be linked with the Freeman House Youth Outreach and Family Connections Programs in cases where Youth 16+ wish to be involved in supporting positive family relationships.



7 COMMUNITY COORDINATION

The Men's Program is part of a coordinated community response to violence, linking intervention with prevention, early intervention and health promotion; linking men with the individual, community and system support and services they identify they need; and mitigating more intrusive interventions.



SUPPORTED ACCESS TO PRIMARY HEALTHCARE

Contact our admin office @fsawns: 902 543-7444

1 WORKER-SUPPORTED

Supported Access to Primary Health Care is a wraparound worker-supported process for linking Lunenburg County youth, adults and families with Primary Health Care who may not otherwise choose to access the healthcare system.



2 COMMUNITY-BASED

Medical consultation and examination rooms are located on-site, with access and follow up support provided as needed by Freeman House and our community partner agencies.



3 PREVENTIVE HEALTHCARE

The program provides preventive individualized primary healthcare access in situations that may escalate into healthcare emergencies if people identify they are not safe to access the healthcare system.



4 GENDER-BASED COMPETENCY

The program provides individualized support for persons regarding sexual and reproductive health including supported access to abortion services.



5 2SLGBTQIA+ SUPPORT

The program supports 2SLGBTQIA+ access to primary healthcare, supporting the physical and sexual health of individuals, families and communities, and supporting non-binary and or transitioning persons in accessing the healthcare system in ways that fit for them.



6 CONFIDENTIAL ACCESS

The site supports safe and confidential access to primary healthcare for rural youth who otherwise may not feel safe to connect with their existing healthcare provider.



7 HARM REDUCTION

The site supports harm reduction and linking youth and families with the non-stigmatizing harm reduction support, services and safe supplies they identify are needed.



Supported Access to Primary Healthcare is a @FSAWNS Program providing wraparound community-based supported access to Nova Scotia Health Authority Nurse Practitioner services.

HOUSING SUPPORT

Lunenburg/Queens Housing Support works with participants who have experienced chronic homelessness; are precariously housed (couch surfing); unhoused (sleeping rough); in public and community institutions (hospital, correctional facility, foster care, transition house) with no housing arranged for exit date; or are at imminent risk of homelessness (eviction within 30 days, leaving intimate partner or family violence, forced out of housing).

Contact: **Cindy MacIsaac**
intake.hsp@gmail.com 902-521-5596

1 OUTREACH ACCESS IN LUNENBURG & QUEENS COUNTIES

Housing Support is mobile and can arrange to meet those in need of outreach services at the community locations where they are in Lunenburg and Queens Counties.



2 DROP-IN ACCESS TO HOUSING SUPPORT AT 629 KING STREET

Drop-in Access to the Housing Support Program will soon be available this Spring at 629 King Street



3 629 KING ST. BASIC NEEDS ACCESS

629 King Street will help Housing Support participants access basic needs including: on-site food, shower & laundry; a mobile phone if needed; and Supported Access to Primary Healthcare for participants who otherwise may not access the healthcare system.



4 THE TRUSTEESHIP PROGRAM

The Trusteeship Program funded by Housing Nova Scotia helps with rental applications, understanding the Residential Tenancies Act, the Child and Family Services Act, money management, financial advocacy, federal and provincial benefits applications, utilities support, and linking with case management in the community.



5 PROVIDES CASE MANAGEMENT SUPPORT

The Case Manager support tenants in their housing by providing wrap around Case Management to assist participants in sustaining their housing while adhering to the Rights-based philosophy and practices of Housing First.



6 INCLUSION IN COMMUNITY

Collaborates with other service providers and organizations to ensure integrated delivery of programs and services. Builds strong working knowledge of and relationships with available community supports and services that benefit participants.



7 SUPPORTS A COORDINATED ACCESS SYSTEM

Access to safe, supported and affordable housing needs to be a collective and coordinated community responsibility. To achieve this collective impact, the Housing Support Program advocates for a Coordinated Access System in our non-designated Rural community. Coordinated Access supports a Rights-based approach to accessing housing, is data-driven for factual accuracy, and supports equitable, safe Intake and Service Delivery.

COMMUNITY
OF CARE

Housing Support is a community-based program @fsawns funded by the Government of Canada's Reaching Home Strategy. Trusteeship is funded by the Nova Scotia Department of Municipal Affairs and Housing.

TRUSTEESHIP

Access to safe, supported and affordable housing needs to be a collective and coordinated responsibility. Community-based trusteeship contributes to this collective impact of our work together. Trusteeship is an integral part of a Coordinated Access to Housing System in a community, supporting a confidential, people-centred, harm reduction, housing first approach to eviction prevention and housing security.

Contact:

Jill Johnson trusteeship.hsp@gmail.com 902 543-7444

1 RENTAL APPLICATIONS



2 UNDERSTANDING THE RESIDENTIAL TENANCIES ACT



3 UNDERSTANDING THE CHILD, YOUTH AND FAMILY SERVICES ACT



4 MONEY MANAGEMENT AND FINANCIAL ADVOCACY



5 FEDERAL AND PROVINCIAL BENEFITS APPLICATIONS



6 APPLYING FOR SUPPORTS PROVIDED THROUGH UTILITIES



7 GETTING LINKED WITH CASE MANAGEMENT SUPPORT IN THE COMMUNITY, TO HELP YOU DEAL WITH COMMUNITY AND SYSTEM ISSUES.



**COMMUNITY
OF CARE**

629 KING STREET FAMILY HOUSING & RURAL YOUTH SHELTER DIVERSION

Contact: Cindy MacIsaac
intake.hsp@gmail.com 902-521-5596

1 SUPPORTIVE RURAL YOUTH SHELTER DIVERSION

Supportive Youth Shelter Diversion provides housing for up to five youth ages 16 to 19 with on-site support and overnight support worker. This option supports rural Lunenburg & Queens County youth who would otherwise end up navigating homelessness and urban shelters, separated from natural supports, at increased risk of violence and human trafficking.

2 SUPPORTED FAMILY HOUSING

Provides transitional Supported Housing for Families. Transitional support may be three months to three years. This housing offers a home for a family ready to intentionally engage with supported opportunities for skills development, education and empowerment. It is an intermediate step to permanent housing.

3 PART OF A COORDINATED ACCESS SYSTEM

Providing access to safe, supported housing needs to be a collective and coordinated community responsibility. To achieve this collective impact, 629 King Street Housing will rely on our emerging Coordinated Access System. Coordinated Access is based on a Rights-based approach to housing and data-driven equitable access to support and services.

4 LINKS WITH 629 BASIC NEEDS SUPPORTS

Includes 629 King Housing Support Program access to basic needs such as food, shower & laundry; mobile phone if needed; and supported access to primary health care for participants who would otherwise not choose to access the healthcare system.



5 LINKS WITH TRUSTEESHIP SUPPORTS

Residents 19 + will be required to participate in the Trusteeship Program funded by Housing Nova Scotia which helps with rental applications, understanding the Residential Tenancies Act, the Child and Family Services Act, money management, financial advocacy, federal and provincial benefits applications, utilities support, and links with case management in the community.

6 LINKS WITH @FSAWNS AND COMMUNITY PARTNER SERVICES

Includes optional access, ages 16 - 24 ,to Freeman House Youth Outreach & Family Connections, access age 19 + to Fathers Support Programming, Supported Access to Primary Healthcare, and connection with the Programs of our Community Partners



COMMUNITY
OF CARE

The 629 King Street site has been funded by the Government of Canada's Homelessness Partnering Strategy, Housing Nova Scotia, and Efficiency Nova Scotia. Freeman Youth Outreach, Family Connections and the Men's Program are funded by the Nova Scotia Dept. of Community Services: Prevention and Early Intervention.

641 KING STREET A RURAL HOUSING TEMPLATE FOR BLENDED VALUE SUSTAINABILITY

1 BLENDED VALUE SUSTAINABILITY

Community sustainability requires positioning social housing within a community-based housing sector, where profit-making can be reinvested within a blended value - social, ecological and financial - commitment to our rural communities.

2 BROWNFIELD CIVIC SITE RENEWAL

Brownfield commercial/industrial sites requiring remediation typically sit empty and decaying at the civic heart of many of our towns, typically in optimal locations for civic renewal and high density social housing development. Constantly extending new greenfield development is socially, ecologically and financially unsustainable for our rural communities.

3 NET-ZERO-ENERGY BUILD

Net-zero-energy consumption is most achievable within rural hub community locations where transportation needs can be minimized through optimizing the location, energy production may be shared, and efficiency data tracked in order to reduce energy poverty.

4 UNIVERSAL DESIGN, MODULAR HOUSING UNITS

Universal design modular units with moveable interior partitions create homes that can be accessed, understood and used to the greatest extent possible by all, regardless of age, size, ability or changing age-in-place abilities requirements over time

5 POST-PANDEMIC, POST-HOUSING CRISIS EQUITY

Covid-19 and the increasing REIT commodification of housing have both made layers of social and housing inequity shockingly visible in our communities. It's become clear to many that we cannot rely on the capitalism that got us into this mess to get us out of it. We can do better.

6 HOUSING CONSTRUCTION & RURAL YOUTH TRADES TRAINING, EDUCATION AND EMPLOYMENT

Links ages 16 - 24 with social enterprise construction trades training through Freeman House Youth Outreach, and links youth with Family Connections, Fathers Support, Supported Access to Primary Healthcare, and with the Programs of our Community Partners

7 ON-SITE SUPPORTED HOUSING, INTEGRATED WITHIN A COORDINATED ACCESS SYSTEM IN A DIVERSE COMMUNITY

Providing access to safe, supported housing needs to be a collective and coordinated community responsibility. Coordinated Access is based on a Rights-based approach to housing and data-driven equitable access to local support and services.

COMMUNITY
OF CARE

641 King Street is a rural housing template for blended value sustainability produced by @fsawns in conjunction with our local Government of Canada funded Reaching Home Housing Support Program of Lunenburg/Queens







