

# Kings Regional Rehabilitation Centre Providing Supports for Persons with Disabilities

## *Developing Potential ~ Improving Lives*



Presentation to Standing Committee on Community Services May 4, 2010



# Kings Regional Rehabilitation Centre



*Developing Potential  
Improving Lives*

[www.krrc.ns.ca](http://www.krrc.ns.ca)





# K R R C

Nearly 50 Years of Community Service  
Located in the Annapolis Valley  
Quality Person Centered Care & Programs  
Serving 215 Adults and Youth  
Over 500 Professional Staff  
Over 150 Volunteers  
A Community Resource



# Who are we?



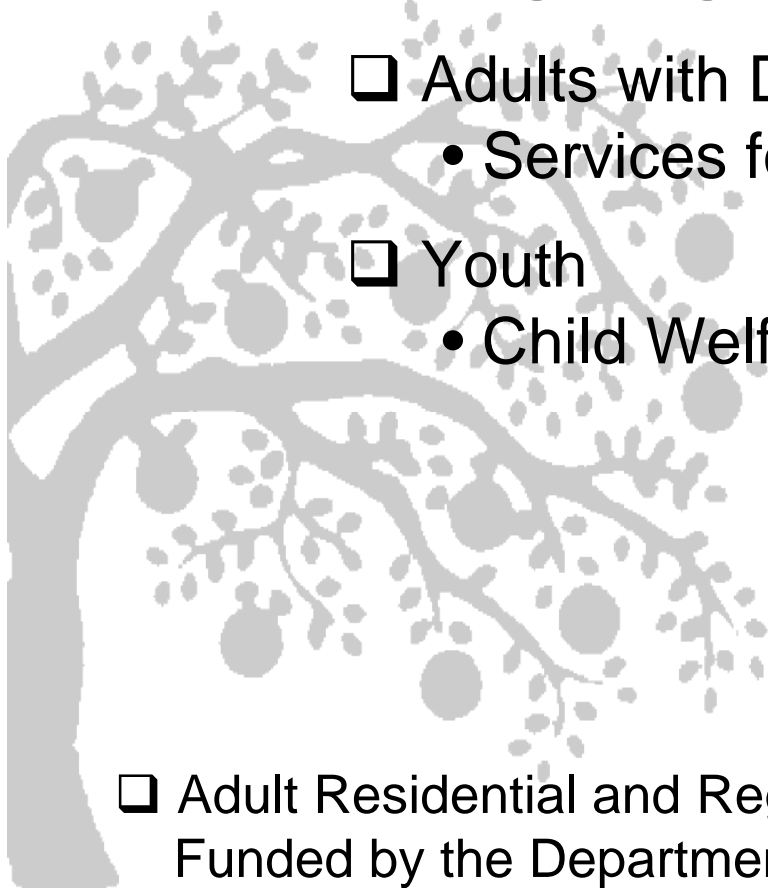
## We are providing Programs and Services that Support

- ☐ Adults with Disabilities
  - Services for Persons with Disabilities (SPD)
- ☐ Youth
  - Child Welfare

### Population We Serve

- Intellectual Disabilities
- Physical Disabilities
- Long term Mental Illness

- ☐ Adult Residential and Regional Rehabilitation Centre (ARC/RRC)  
Funded by the Department of Community Services





## **Our Mission**

***In partnership with individuals, families and the community, we provide supportive living, learning and working environments to help persons with challenges to use their skills to improve their lives.***

## **Our Values**

***Respect • Collaboration • Compassion  
Progressiveness • Accountability • Learning***



# Continuum of Supports



Creating opportunities for our clients to participate in a range of supportive living, learning, and work environments both in-centre and through community outreach programs.

ARC/RRC (178)	Community Supports	Outreach
<ul style="list-style-type: none"> <li><input type="checkbox"/> <b>Supportive Living Facility (24/7)</b></li> <li><input type="checkbox"/> <b>Seven unique client units</b></li> <li><input type="checkbox"/> <b>MacArthur Psychogeriatric Program</b></li> </ul>	<ul style="list-style-type: none"> <li><input type="checkbox"/> <b>Independent Living Program (21 hrs/wk)</b></li> <li><input type="checkbox"/> <b>Community Homes</b> <ul style="list-style-type: none"> <li>• Annapolis Valley (24 hrs/day)</li> <li>• Bridgewater (24 hrs/day)</li> </ul> </li> <li><input type="checkbox"/> <b>Day Programs</b> <ul style="list-style-type: none"> <li>• Youth (8 hrs/day)</li> </ul> </li> <li><input type="checkbox"/> <b>Adult Service Centres</b> <ul style="list-style-type: none"> <li>• Plank 'n' Hammer</li> <li>• Apple Tree Industries</li> </ul> </li> </ul>	<ul style="list-style-type: none"> <li><input type="checkbox"/> <b>Consultations</b></li> <li><input type="checkbox"/> <b>Learning and Technology Centre</b> <ul style="list-style-type: none"> <li>• Assistive Technology Services</li> <li>• Loan Library</li> <li>• Professional Development</li> <li>• Technology Training</li> <li>• Extensive Resources</li> </ul> </li> <li><input type="checkbox"/> <b>Education and Professional Development Services</b></li> </ul>





# Utilization of KRRC Services



## **Geographic**

- ☐ Western Region
- ☐ Central
- ☐ Northern
- ☐ Eastern

## **Referrals for Placement**

- ☐ Acute Psychiatry Units
- ☐ East Coast Forensics
- ☐ Long Term Care Facilities
- ☐ Other providers  
(Community Homes, ARC and RCF)
- ☐ Emergency Departments
- ☐ Home and Family

## **Profile of Clients**

- ☐ More than one Diagnosis
- ☐ 70 individuals in wheelchairs
- ☐ Most individuals require  
Level 4 & 5 Support

## **Professional Services**

- ☐ Educational
- ☐ Medical Services
- ☐ Nursing
- ☐ Nutrition
- ☐ Occupational Therapy
- ☐ Psychology and Psychiatry
- ☐ Physiotherapy
- ☐ Recreation
- ☐ Social Work
- ☐ Speech-Language



# About us



- ☐ Compassionate and Committed Staff
- ☐ We live our mission and values
- ☐ Low staff turnover rate
- ☐ Diverse Services and Programs
- ☐ Our specialities increasingly recognized
- ☐ Adaptable to the needs of the population
- ☐ Support persons who require intensive supports
- ☐ Work with persons and their families in providing a caring and inclusive environment
- ☐ Demonstrate our commitment to our community



# Our Progress



- ☐ Person Centered Care and Accountability to individuals and families
- ☐ Accredited Facility - Accreditation Canada
- ☐ Strong Safety and Emergency Programs
- ☐ Leading Practices
  - Learning and Technology Centre (LTC)
  - Plank 'n' Hammer
- ☐ Since 2003
  - Opened Three Homes
  - Three Independent Living Sites
  - One RRC
- ☐ Research Study & Pain Assessment Tool  
Dalhousie University and KRRC

# Our Progress



## ☐ Strong Partnerships

- Local Business
- Acadia University
- Nova Scotia Community College (NSCC)
- Annapolis Valley Regional School Board (AVRSB)
- New partnership SPCA

## ☐ 5th Anniversary Tools for Life Conference and Exhibit

## ☐ Expansion of Sensory Program

## ☐ Literacy Programs

## ☐ Recreation and Leisure Programs

## ☐ Mobius Environmental Award 2005 & 2009

## ☐ Persons of KRRC Book Launch

## ☐ Clients volunteering Kentville Soup kitchen



# GAPS



- ☐ Demand for Community Housing
- ☐ Transition of Youth to Adult placement
- ☐ Planning for a changing population - infrastructure needs
- ☐ Capital improvements and Infrastructure
- ☐ Education and Training Requests
- ☐ Demand for Consultation and Education for outreach
  - Professional staff
  - Assistive Technology Services
- ☐ Understanding the System/Process (Security)
- ☐ Recognizing, funding and using expertise in our sector

## What are clients and families saying?



“I really notice the little things that make all the difference. I visit quite often to see my wife at KRRC. She has received great care but is more than care. Everyday the staff show they care about her in so many ways.”

Husband