

Services for Persons with Disabilities

Standing Committee on Community Services

May 4, 2010

Community Services


NOVA SCOTIA

SPD Overview

- Services and support to children, youth and adults with disabilities
- Approximately 5000 clients are being served
- Three populations:
 - 1)Intellectual Disability
 - 2)Long Term Mental Illness
 - 3)Physical Disability

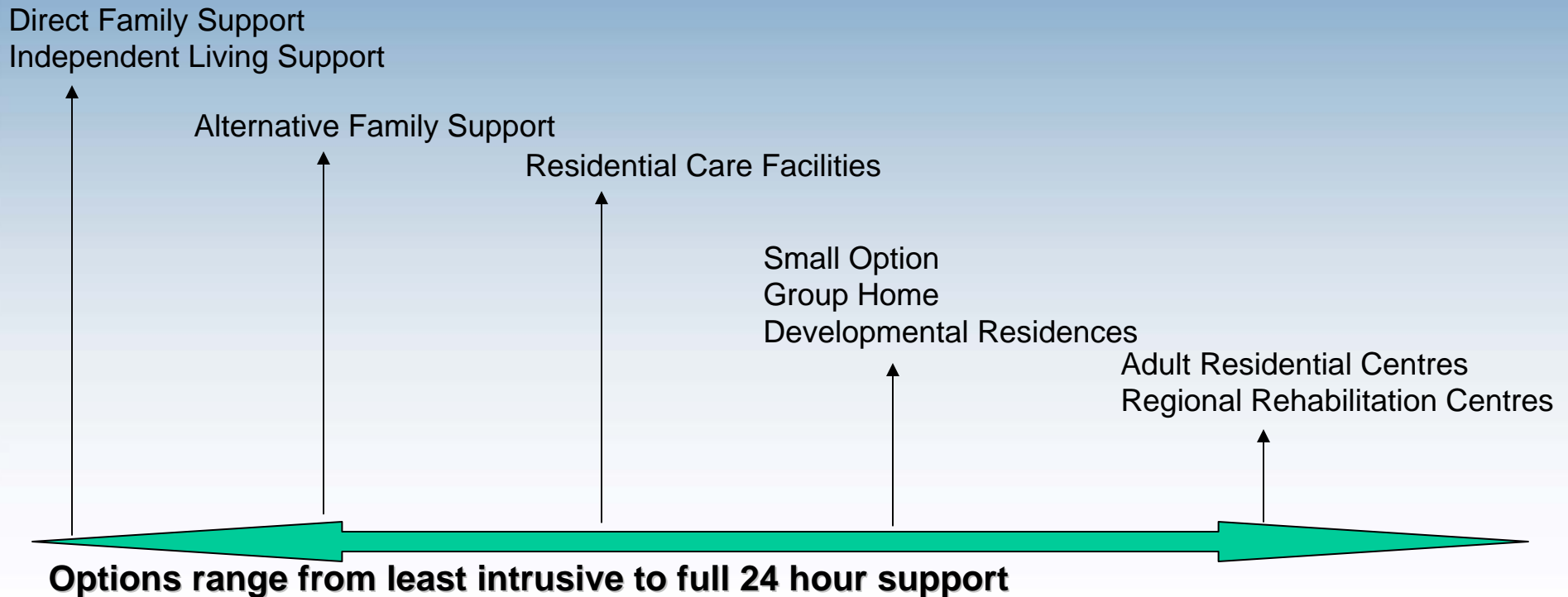
SPD Commitment

Services that offer, promote and foster independence and inclusion in the community, wherever possible

SPD History

- *Homes for Special Care Act and Social Assistance Act*
- Voluntary program - needs and income tested
- Facility based program that was expanded to include community options
- Municipally delivered, provincially regulated, until 1996

SPD Continuum of Support



*Adult Service Centres and Adult Day Programs are necessary to maintain this existing continuum

Community Services


NOVA SCOTIA

Range of Services

- Support to Families
- Community Based Support
- Homes for Special Care
- Adult Day Programs

Types of Community Based Support

- Direct Family Support
- Independent Living Support
- Alternative Family Support
- Small Option Homes
- Adult Service Centres

Direct Family Support (DFS)

- **Respite Support**
 - Provides funding to enable families to purchase respite services in order to assist families to care for a family member with a disability at home
- **Special Needs**
 - Financial assistance to purchase approved items of special requirement

Independent Living Support (ILS)

Provides up to 21 hours a week of supports & services to persons with disabilities who are semi-independent & require minimum support in their own apartment or home.

Alternative Family Support (AFS)

Support and supervision provided for up to two individuals in an approved, private family home.

Small Option Homes

Staffed residential settings for up to three individuals who require assistance in many aspects of daily living.

Adult Service Centres

- Adult Service Centres provide:
 - employment
 - skills training
 - day programs for 1950 individuals in 30 centres across Nova Scotia

Homes for Special Care

- Special care facilities licensed under the *Home for Special Care Act*.
- Admission to a home for special care is contingent on the applicant's approved level of support.

Types of Homes for Special Care

- Developmental Residences
- Group Homes
- Residential Care Facilities
- Adult Residential Centres
- Regional Rehabilitation Centres

Developmental Residences

Provide support for persons with Intellectual disabilities who require:

- enhanced to specialized support supervision and skill enhancement; some individuals have behavioural challenges

Group Homes

Provide support for persons with disabilities who require:

- minimal to moderate support and supervision to develop potential and to enhance skill development

Residential Care Facilities

Provide support to persons with disabilities who require:

- minimal support and supervision to enhance or maintain skills, and are independent in their personal care or who have limited personal care needs

Adult Residential Centres

Provide support to persons with disabilities who require:

- enhanced to total ongoing support, supervision and skill development

Regional Rehabilitation Centres

Provide rehabilitation and developmental support to persons with disabilities who require:

- ongoing support, assistance, skill development and behavioural intervention, some of which is at the specialized level

Accessing Services

- Applications to the SPD Program are accepted in Regional Offices from individuals or person authorized to act on their behalf.
- Information provided by SPD Staff:
 - Financial eligibility requirements
 - Functional eligibility, assessment, medical and consent requirements, and
 - Description of services and the status of wait list(s)

Continuum of Residential Supports

March 2010

<u>Type of Facility/Program</u>	<u># of Homes</u>	<u>#of Beds/Clients</u>
• Alternative Family Support	125	200
• Independent Living Support		711
• Small Option Homes	207	621
• Direct Family Support (Children and Adults)		1895
TOTAL COMMUNITY BASED SERVICE OPTION	332	3427
• Residential Care Facilities	23	471
• Adult Residential Centres	7	476
• Group Homes/Developmental Residences	88	506
• Regional Rehabilitation Centres	4	186
TOTAL LICENSED SERVICE OPTIONS	122	1639
• Adult Service Centres (Day Programs)	30 Centres	1950
GRAND TOTAL	454	5,066

Community Services



SPD Progress Report

- New Assessment & Support Planning Tools
- New Policies, Standards and Forms
- Provincial Wait List Procedures
- Licensing Transformation
- Client Reassessment Project
- Service Agreements
- Continue developing partnerships within the sectors

SPD Progress Report

- *Personal Directives Act (PDA):* April 1, 2010
- *Protection for Persons in Care Act (PPC):*
Oct 1, 2007
- Provincial Residential Rate Review
- Management Compensation Review
- Increased Capacity

inclusion • equal opportunity • recognition



Presentation to Standing Committee on Community Services

May 4, 2010

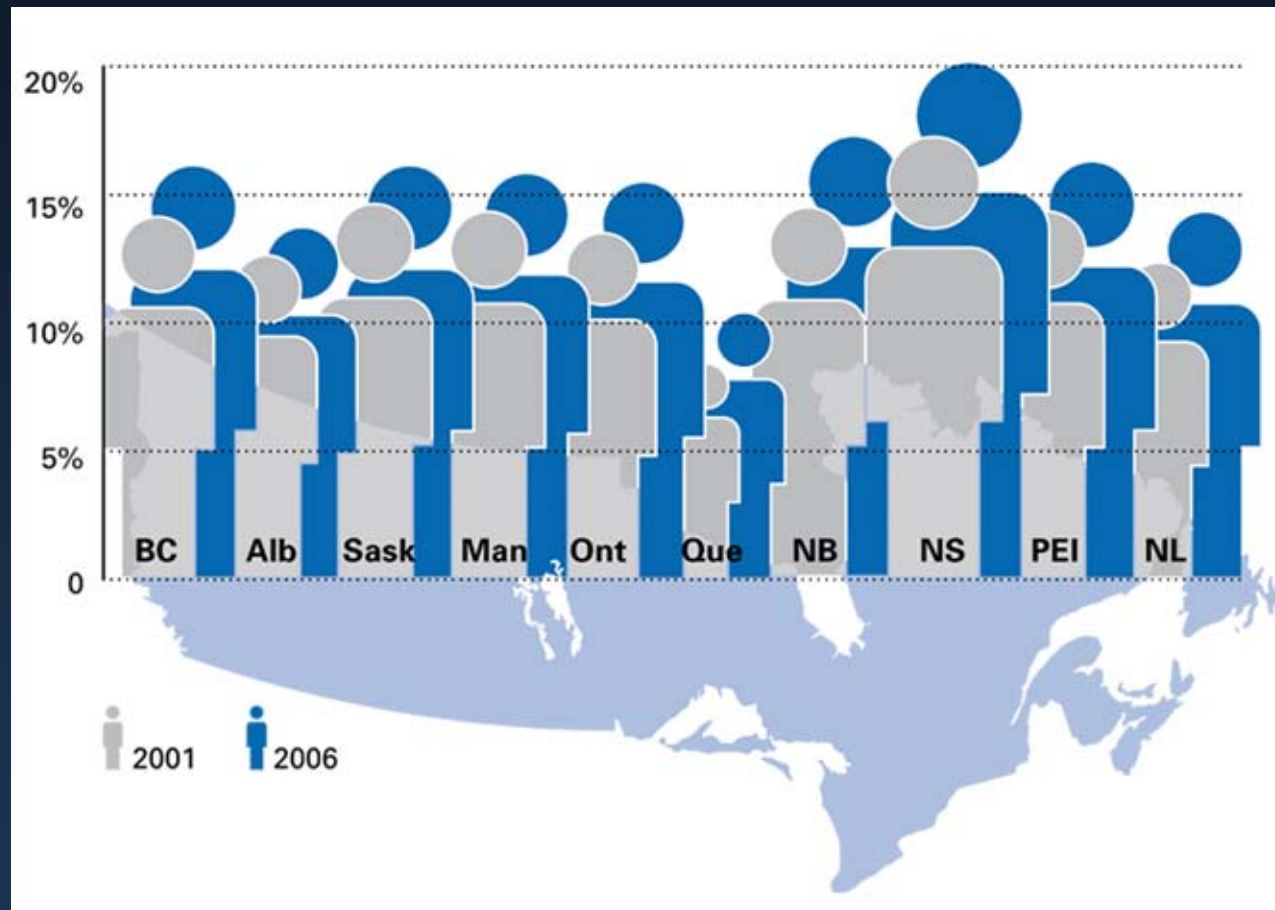
Disabled Persons Commission

- established in 1989
- governed by the Disabled Persons Act.

Disabled Persons Act

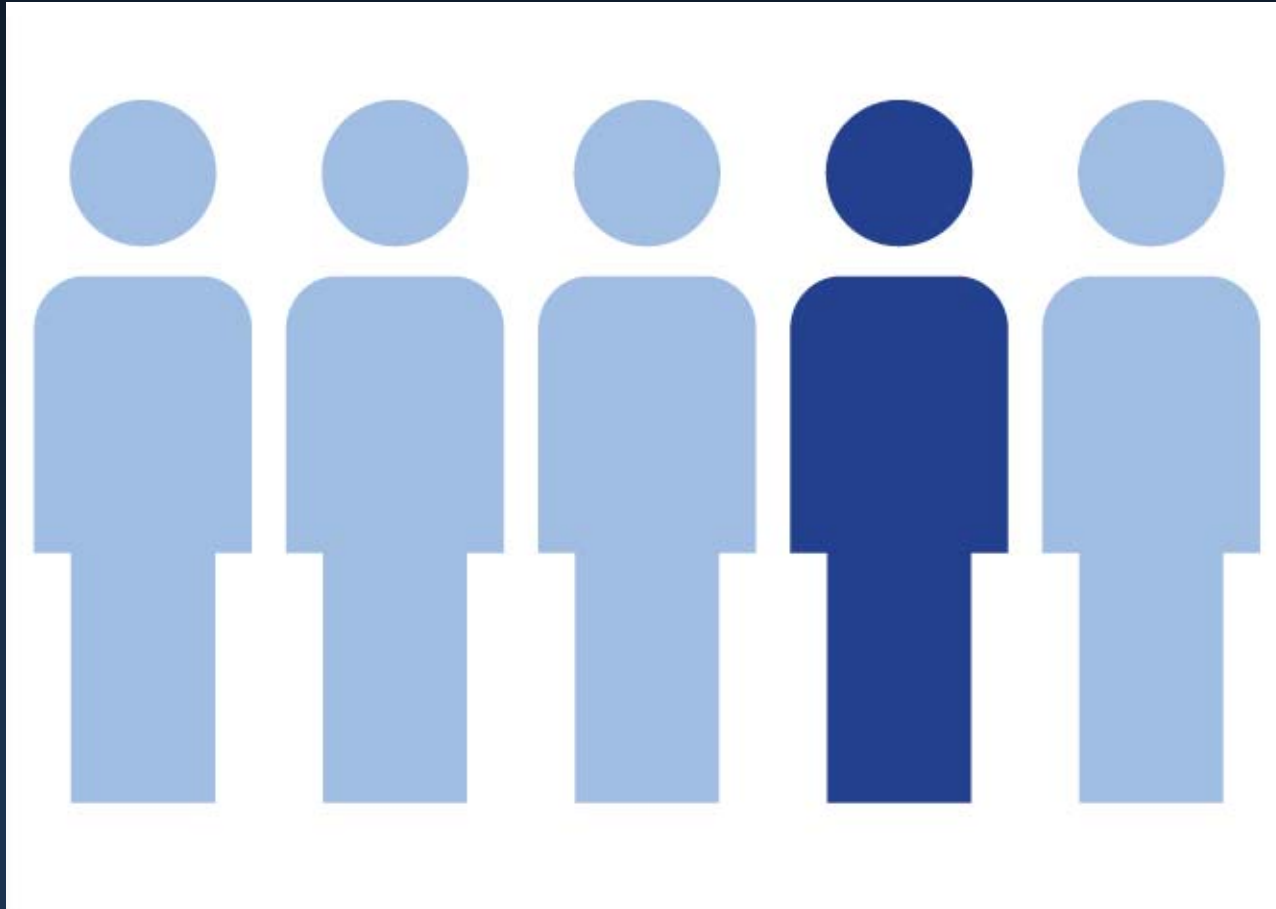
- ***Provide*** an opportunity for persons with disabilities to have a role in the development of government policies and programs that affect persons with disabilities.
- ***Provide*** a central place for the concerns of persons with disabilities to be shared and passed on to the appropriate provincial government department.
- ***Provide*** an opportunity for provincial government departments to make the disability community aware of policies, programs and services that they are developing for persons with disabilities.

Prevalence of Disability in Canada and the Provinces



Source: Statistics Canada,
PALS 2001, 2006

One in five Nova Scotians identifies themselves as having a disability



Source: Statistics Canada,
PALS 2001, 2006

Disabled Persons Commission

- 12 members
- 7 disability community representatives
- 5 departmental representatives

Composition of the Commission

- Community members: Yarmouth, Wolfville, Halifax, Truro, Pictou, and Sydney
- Government reps: Community Services, Education, Health, Labour and Workforce Development and Service Nova Scotia and Municipal Relations.

Coordinating Committee of Ministers

- Meet twice a year
- Advise 5 ministers on issues
- Ministers educate the Commission on programs and services

Vision

- Our **vision** is to be a leader in the areas of education and awareness, accessibility, research and policy analysis, and the employability of Nova Scotians with disabilities.

Mission

- Our **mission** is to support the social and economic inclusion of Nova Scotians with disabilities

Our Values

- The **inclusion** of people with disabilities as active decision makers at all levels of government and in the corporate and voluntary sectors;
- **equal opportunity** and universal access to the physical environment, services, and information for people with disabilities and:
- the **recognition** that people with disabilities make valuable contributions to a healthy, diverse society

5 Priority Areas

- 1. Administrative Capacity**
- 2. Information, Education and Awareness**
- 3. Building and Dwelling Accessibility**
- 4. Research, Policy Analysis and Partnership related to disability supports**
- 5. Employability of persons with disabilities.**

Administrative Capacity

- To improve upon our administrative capacity by continuing to find ways to increase the number of staff who work at the Commission.

Information, Awareness, Education

Increase the visibility of the Disabled Persons Commission and make the disability community, government and the general public, better aware of the issues, programs and services available to and concerning persons with disabilities.

Building and Dwelling Accessibility

Ensure that persons with disabilities have access to provincial government buildings and Nova Scotia becomes more accessible to residents and visitors.

Research, Policy Analysis and Partnership – Disability Supports

- Continue to be an active participant in research, policy analysis and partnership development to ensure that persons with disabilities have adequate levels of support to fully participate in their communities.

Employability of Persons with Disabilities

- Promote a continuum of employment opportunities for persons with disabilities that include paid employment, supported employment and volunteering

Questions?

Kings Regional Rehabilitation Centre Providing Supports for Persons with Disabilities

Developing Potential ~ Improving Lives



Presentation to Standing Committee on Community Services May 4, 2010

Kings Regional Rehabilitation Centre



*Developing Potential
Improving Lives*

www.krrc.ns.ca





K R R C

Nearly 50 Years of Community Service
Located in the Annapolis Valley
Quality Person Centered Care & Programs
Serving 215 Adults and Youth
Over 500 Professional Staff
Over 150 Volunteers
A Community Resource

Who are we?



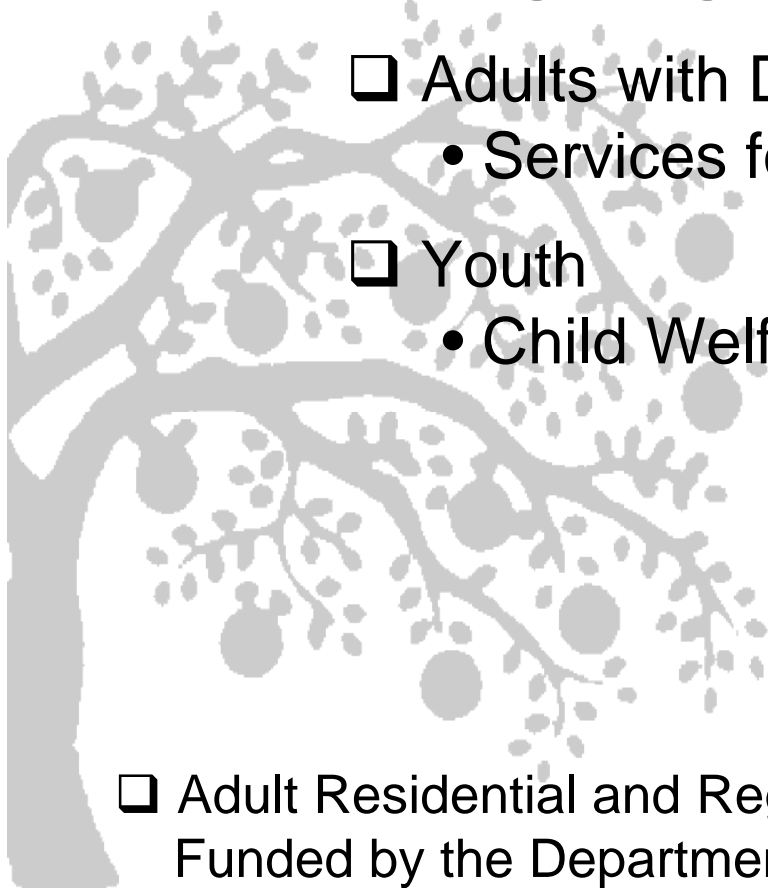
We are providing Programs and Services that Support

- ☐ Adults with Disabilities
 - Services for Persons with Disabilities (SPD)
- ☐ Youth
 - Child Welfare

Population We Serve

- Intellectual Disabilities
- Physical Disabilities
- Long term Mental Illness

- ☐ Adult Residential and Regional Rehabilitation Centre (ARC/RRC)
Funded by the Department of Community Services





Our Mission

In partnership with individuals, families and the community, we provide supportive living, learning and working environments to help persons with challenges to use their skills to improve their lives.

Our Values

***Respect • Collaboration • Compassion
Progressiveness • Accountability • Learning***



Continuum of Supports



Creating opportunities for our clients to participate in a range of supportive living, learning, and work environments both in-centre and through community outreach programs.

ARC/RRC (178)	Community Supports	Outreach
<ul style="list-style-type: none"> <input type="checkbox"/> Supportive Living Facility (24/7) <input type="checkbox"/> Seven unique client units <input type="checkbox"/> MacArthur Psychogeriatric Program 	<ul style="list-style-type: none"> <input type="checkbox"/> Independent Living Program (21 hrs/wk) <input type="checkbox"/> Community Homes <ul style="list-style-type: none"> • Annapolis Valley (24 hrs/day) • Bridgewater (24 hrs/day) <input type="checkbox"/> Day Programs <ul style="list-style-type: none"> • Youth (8 hrs/day) <input type="checkbox"/> Adult Service Centres <ul style="list-style-type: none"> • Plank 'n' Hammer • Apple Tree Industries 	<ul style="list-style-type: none"> <input type="checkbox"/> Consultations <input type="checkbox"/> Learning and Technology Centre <ul style="list-style-type: none"> • Assistive Technology Services • Loan Library • Professional Development • Technology Training • Extensive Resources <input type="checkbox"/> Education and Professional Development Services



Utilization of KRRC Services



Geographic

- ☐ Western Region
- ☐ Central
- ☐ Northern
- ☐ Eastern

Referrals for Placement

- ☐ Acute Psychiatry Units
- ☐ East Coast Forensics
- ☐ Long Term Care Facilities
- ☐ Other providers
(Community Homes, ARC and RCF)
- ☐ Emergency Departments
- ☐ Home and Family

Profile of Clients

- ☐ More than one Diagnosis
- ☐ 70 individuals in wheelchairs
- ☐ Most individuals require
Level 4 & 5 Support

Professional Services

- ☐ Educational
- ☐ Medical Services
- ☐ Nursing
- ☐ Nutrition
- ☐ Occupational Therapy
- ☐ Psychology and Psychiatry
- ☐ Physiotherapy
- ☐ Recreation
- ☐ Social Work
- ☐ Speech-Language



About us



- ☐ Compassionate and Committed Staff
- ☐ We live our mission and values
- ☐ Low staff turnover rate
- ☐ Diverse Services and Programs
- ☐ Our specialities increasingly recognized
- ☐ Adaptable to the needs of the population
- ☐ Support persons who require intensive supports
- ☐ Work with persons and their families in providing a caring and inclusive environment
- ☐ Demonstrate our commitment to our community

Our Progress



- ☐ Person Centered Care and Accountability to individuals and families
- ☐ Accredited Facility - Accreditation Canada
- ☐ Strong Safety and Emergency Programs
- ☐ Leading Practices
 - Learning and Technology Centre (LTC)
 - Plank 'n' Hammer
- ☐ Since 2003
 - Opened Three Homes
 - Three Independent Living Sites
 - One RRC
- ☐ Research Study & Pain Assessment Tool
Dalhousie University and KRRC

Our Progress



☐ Strong Partnerships

- Local Business
- Acadia University
- Nova Scotia Community College (NSCC)
- Annapolis Valley Regional School Board (AVRSB)
- New partnership SPCA

☐ 5th Anniversary Tools for Life Conference and Exhibit

☐ Expansion of Sensory Program

☐ Literacy Programs

☐ Recreation and Leisure Programs

☐ Mobius Environmental Award 2005 & 2009

☐ Persons of KRRC Book Launch

☐ Clients volunteering Kentville Soup kitchen

GAPS



- ☐ Demand for Community Housing
- ☐ Transition of Youth to Adult placement
- ☐ Planning for a changing population - infrastructure needs
- ☐ Capital improvements and Infrastructure
- ☐ Education and Training Requests
- ☐ Demand for Consultation and Education for outreach
 - Professional staff
 - Assistive Technology Services
- ☐ Understanding the System/Process (Security)
- ☐ Recognizing, funding and using expertise in our sector

What are clients and families saying?



“I really notice the little things that make all the difference. I visit quite often to see my wife at KRRC. She has received great care but is more than care. Everyday the staff show they care about her in so many ways.”

Husband